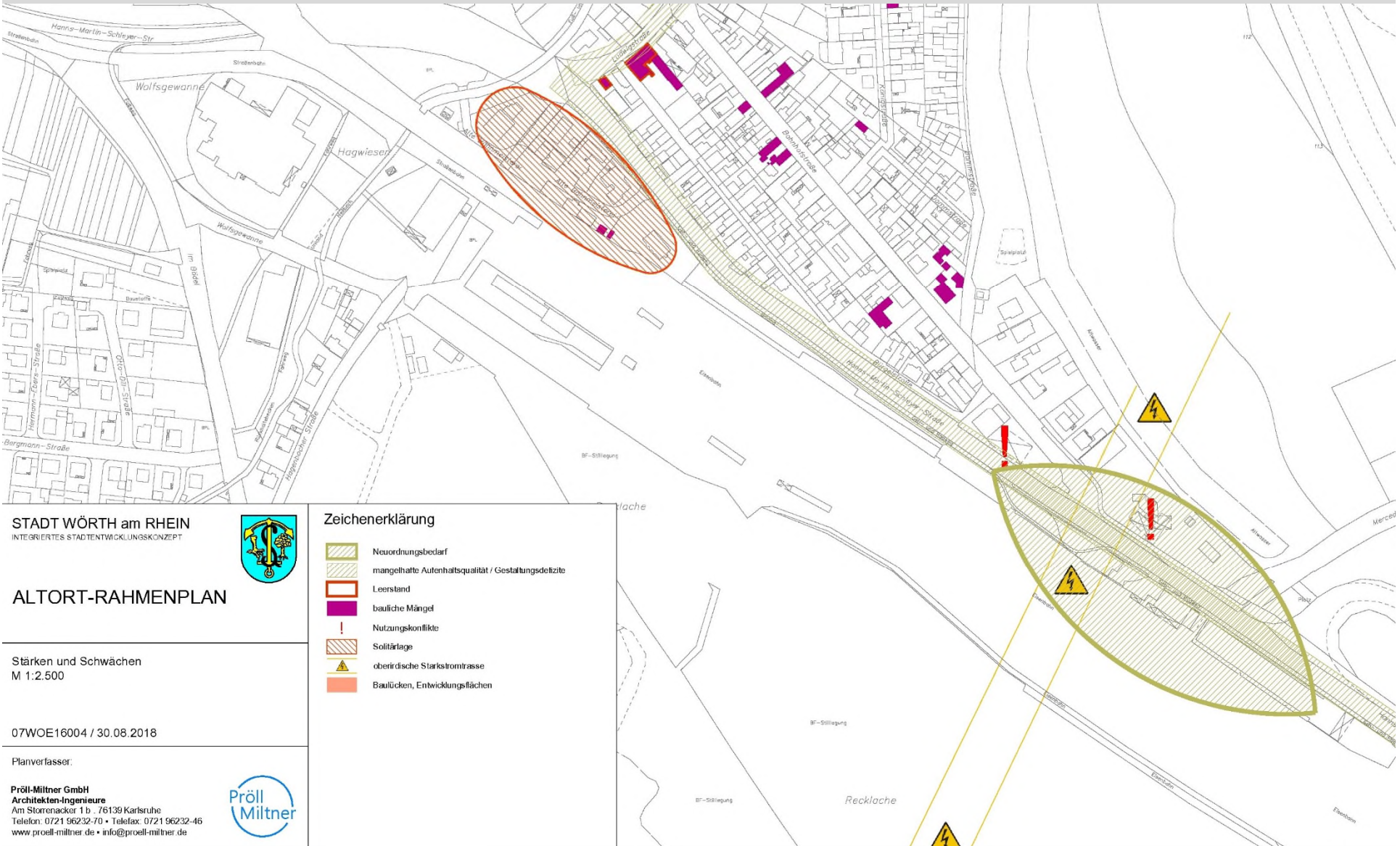


Bürgerbeteiligung Konzept

Altortrahmenplan Wörth, 08.10.2018

01 Rückschau, konzeptionelle Ideen





STADT WÖRTH am RHEIN
 INTEGRIERTES STADTENTWICKLUNGSKONZEPT



ALTORT-RAHMENPLAN

Stärken und Schwächen
 M 1:2.500









07W0E16004 / 30.08.2018

Planverfasser:

Pröll-Miltner GmbH
 Architekten-Ingenieure
 Am Störckenacker 1 b 76139 Karlsruhe
 Telefon 0721 96232-70 • Telefax 0721 96232-46
 www.proell-miltner.de • info@proell-miltner.de

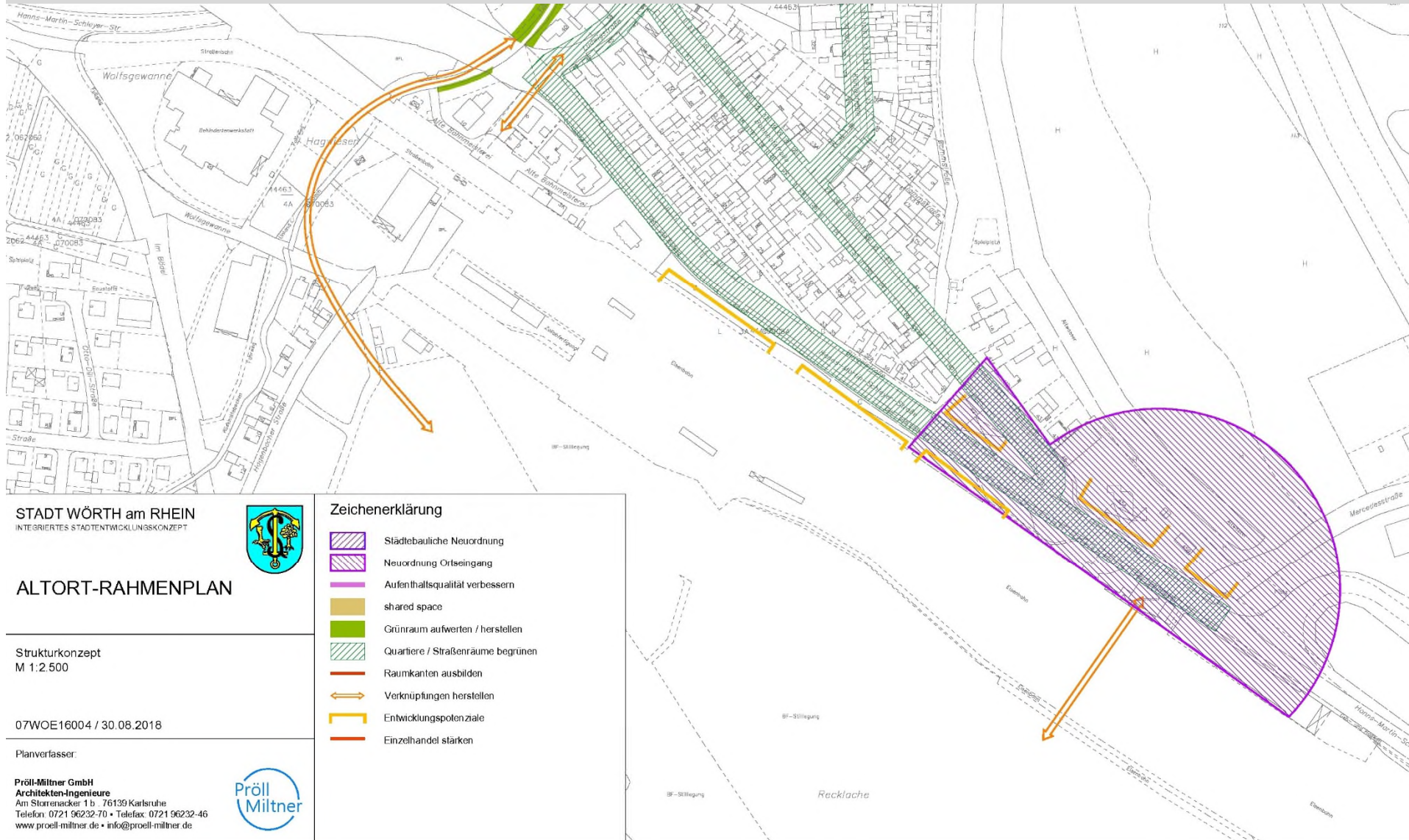


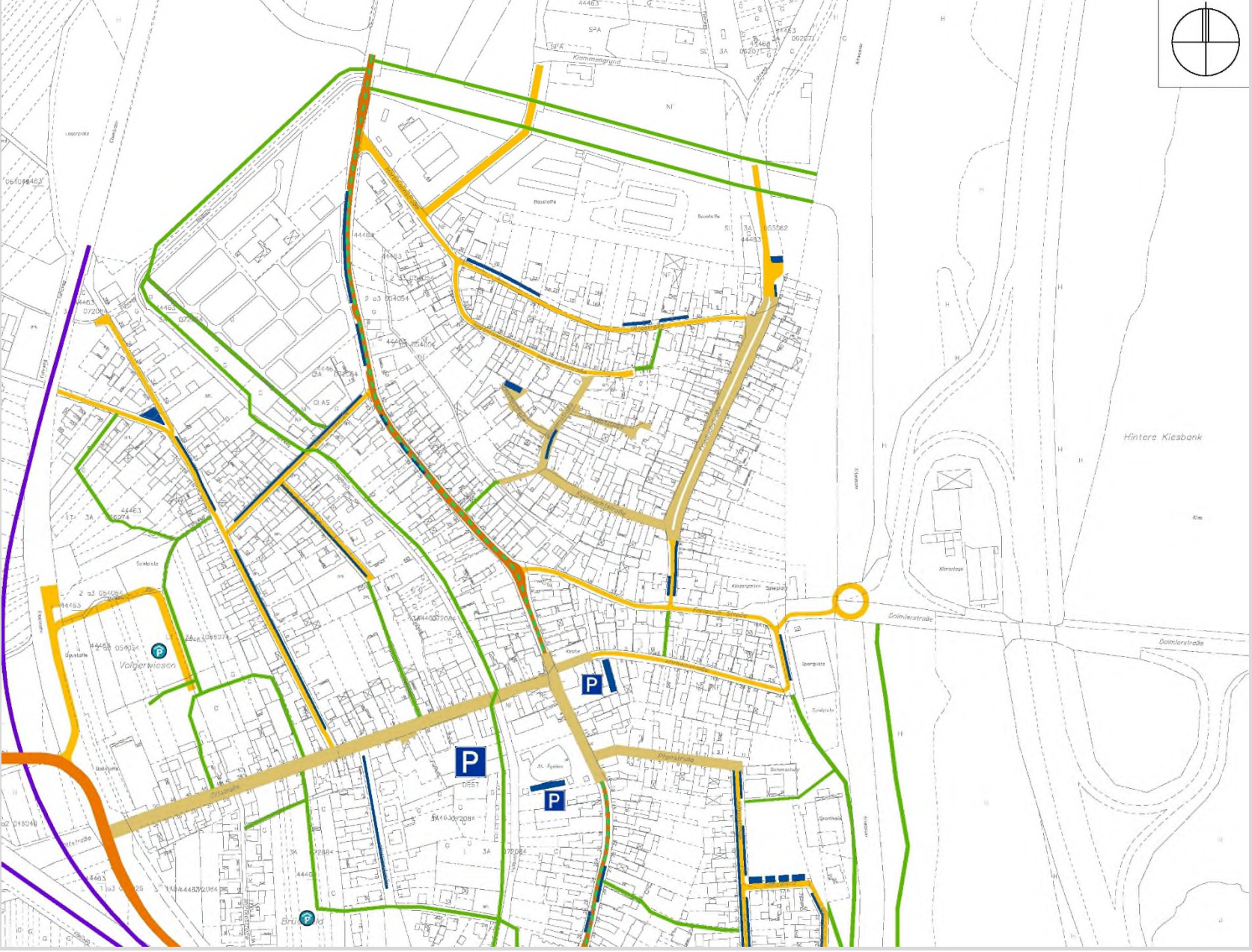
Zeichenerklärung

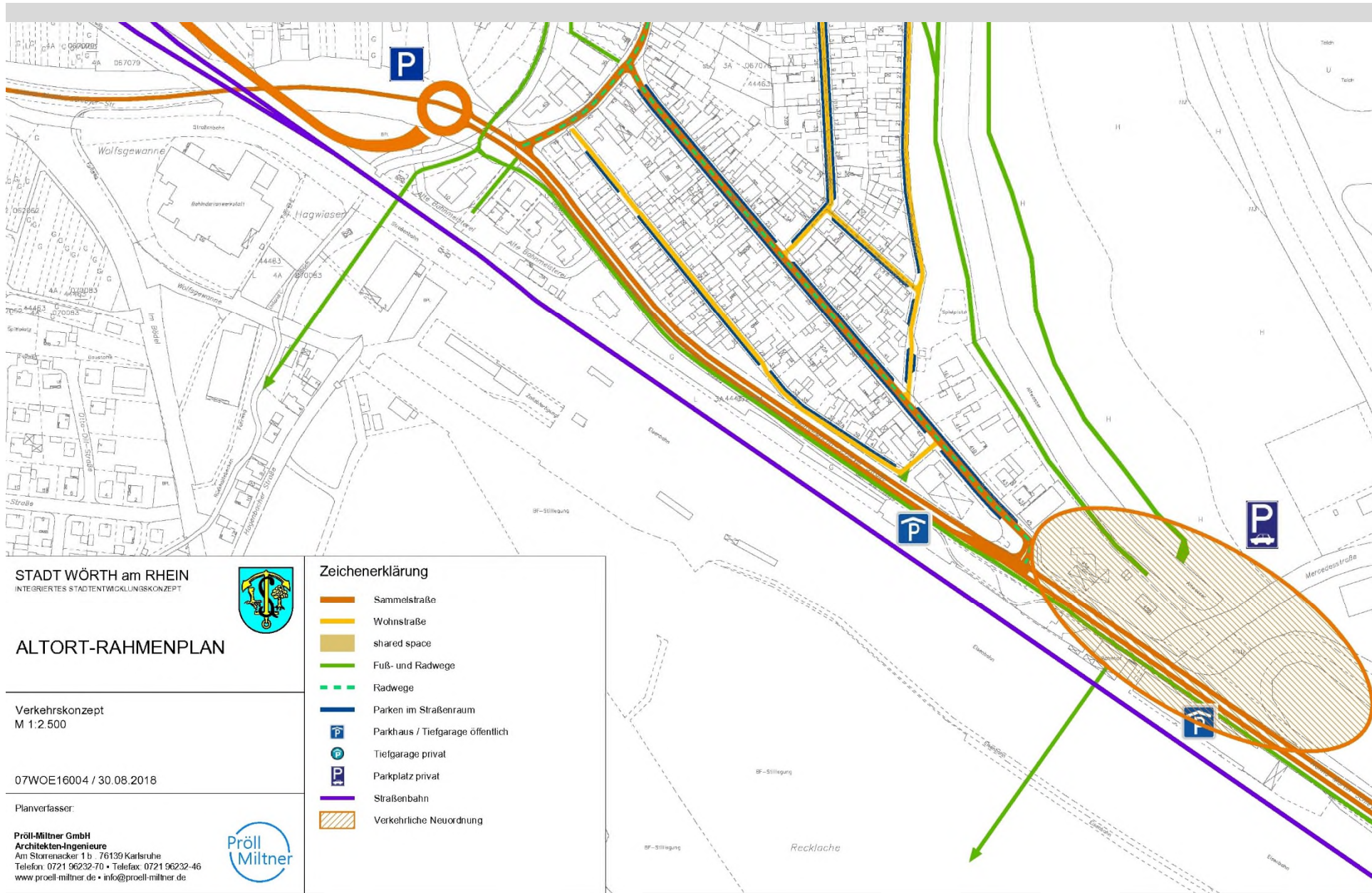
-  Neuordnungsbedarf
-  mangelhafte Außenhaltsqualität / Gestaltungsdelizite
-  Leerstand
-  bauliche Mängel
-  Nutzungskonflikte
-  Solitärlage
-  oberirdische Starkstromtrasse
-  Baulücken, Entwicklungsflächen



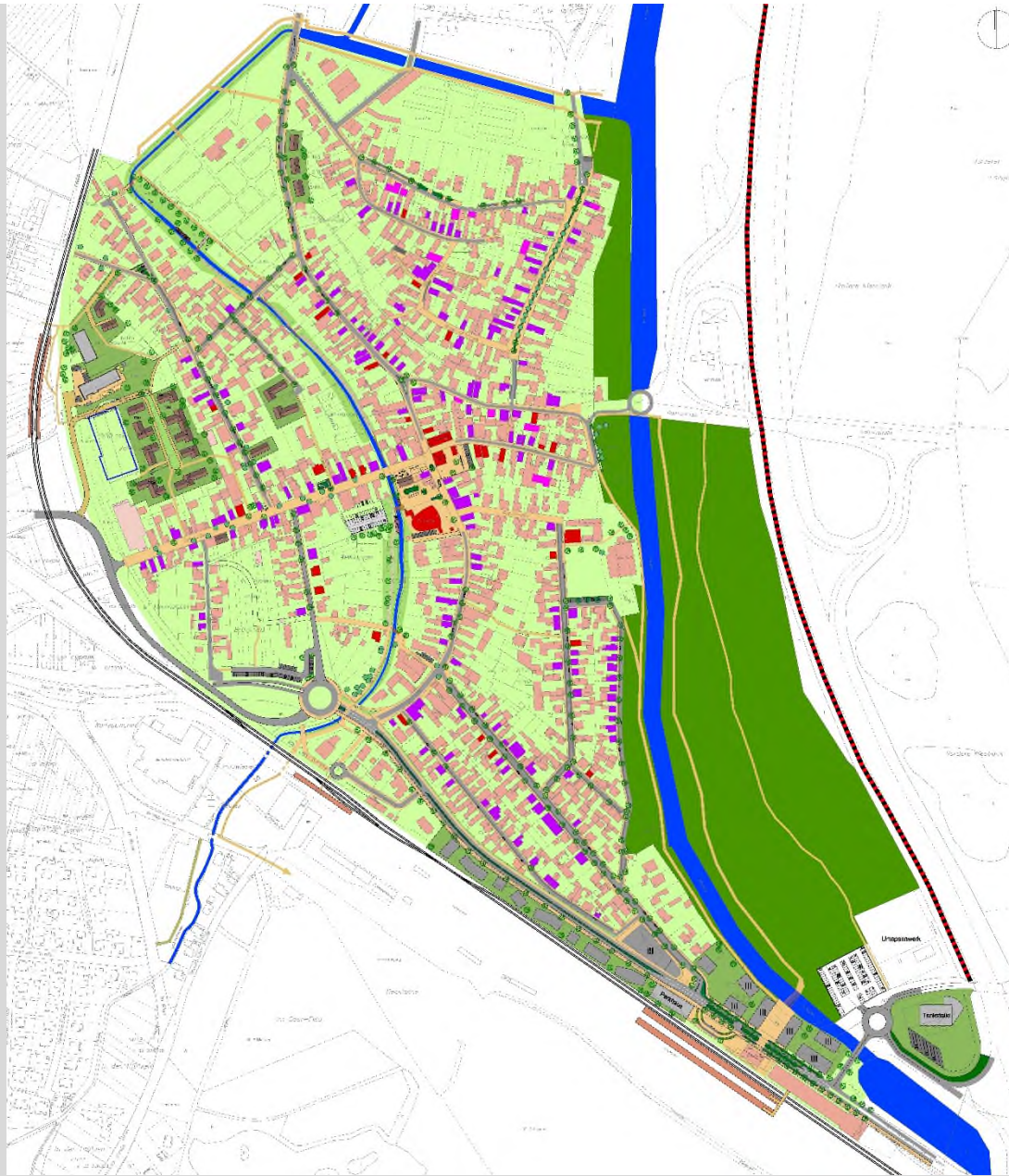








02 Konzepte

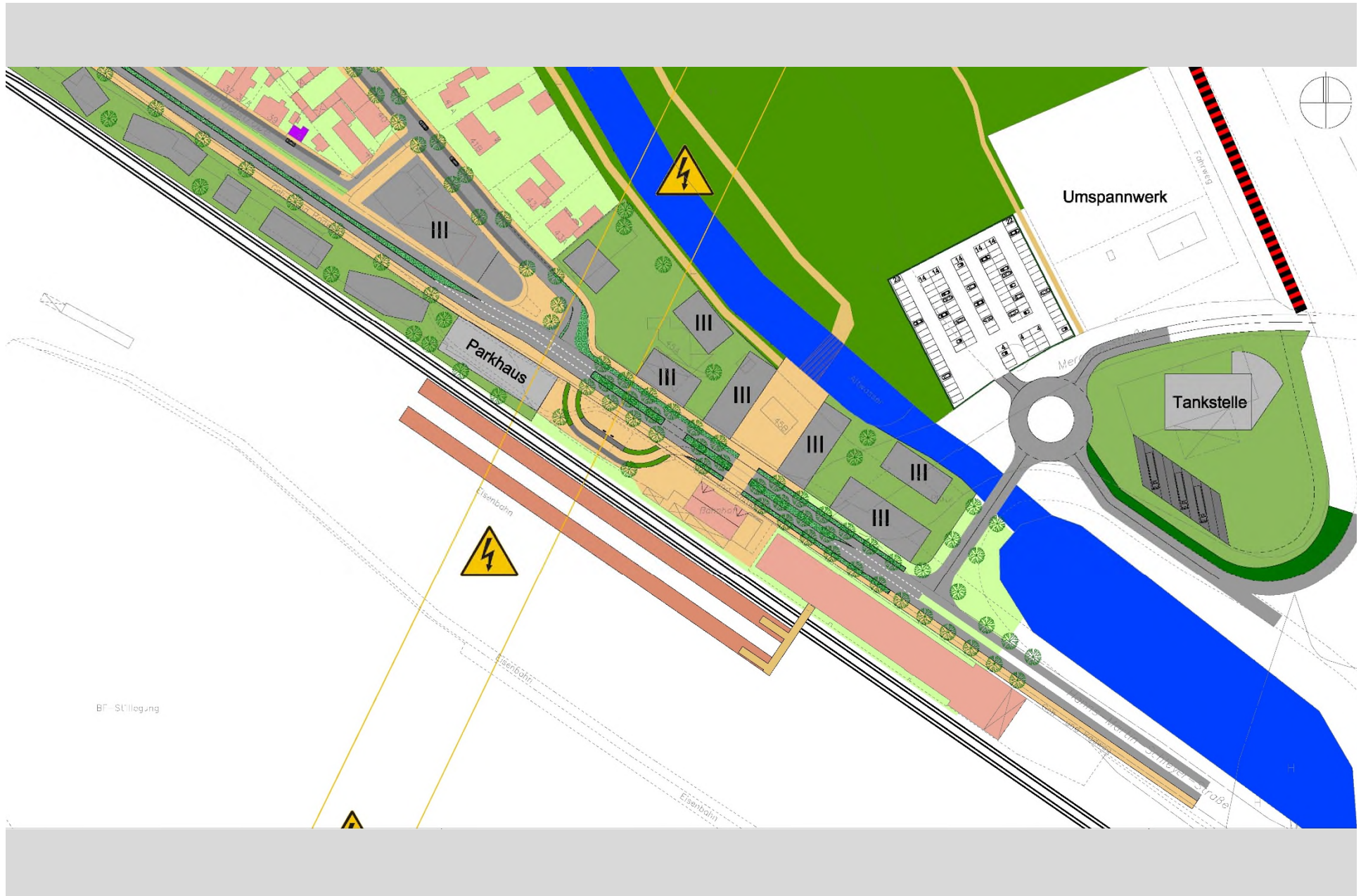












03 Ausblick

04 Diskussion